

# KIRAN STEAM BOILER

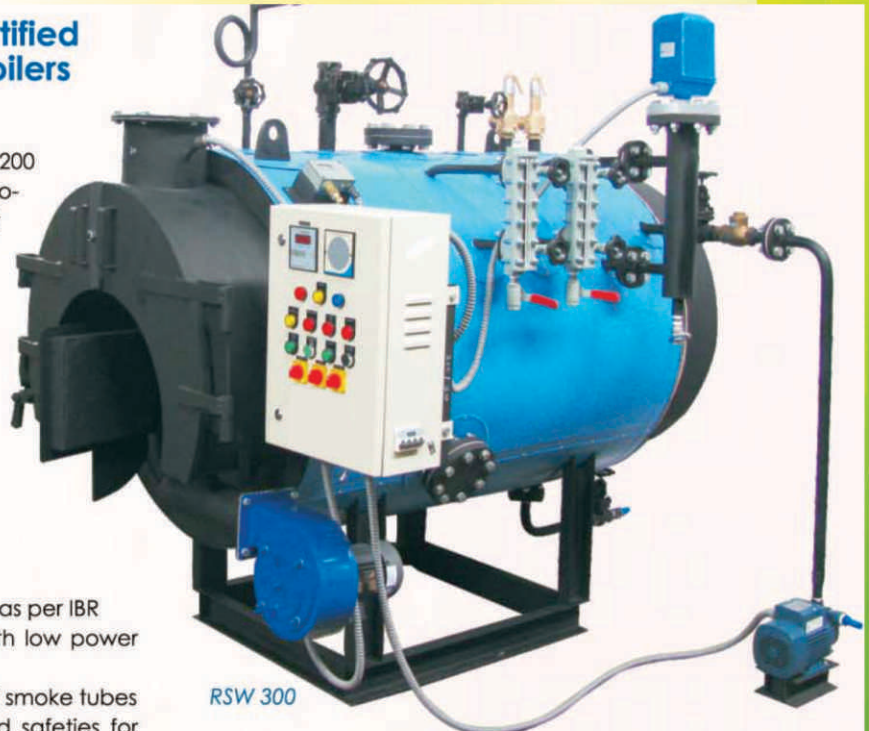


## Shell Type 2 Pass IBR Certified Solid Fuel Fired Steam Boilers

Steam boilers in the output range of 200 to 600 kg/hr are manufactured in two-pass smoke-tube, dry back compact shell type configuration and designed in conformity with SIB/Class 1 IBR codes. These boilers are fitted with FD/ID combustion & hinged refractory doors for ease of operation & maintenance making them quite compact and efficient packaged machines.

The salient features are:

- 2 pass compact steam boiler built as per IBR
- Easy to operate and maintain with low power consumption
- Hinged doors for quick cleaning of smoke tubes
- Fitted with necessary controls and safeties for trouble-free operation
- Sufficient water/steam volume for steady steam output
- RSW 300, RSW 400 supplied with ID & FD fans
- RSW 500, RSW 600 supplied with ID fans



RSW 300

Model	Capacity (kg/hr)
RSW 300	300
RSW 400	400
RSW 500	500
RSW 600	600



RSW 80

RSW 80 is a vertical steam boiler with refractory lined combustion chamber. The unit volumetric capacity is less than 25 litres, hence it does not come under the purview of IBR.

Fuel feeding is manual and all other controls like water feed, level control are automatic. It is available normally with working pressure of 5Kgs/sqcm.

Unit is easy to use and maintain, with cheap spares.

Model	Capacity (kg/hr)
RSW 80	80

The advantages are:

- Vertical, forced draft combustion, single pass, compact construction.
- Outside the purview of IBR.
- Economical, safe design, delivers good quality dry steam.
- Fully shop-assembled, ready-to-use design.

## Solid Fuel Fired Shell Type Flue Tube Steam Boilers



The RSW series is a horizontal shell type integral furnace, flue tube, solid fuel fired steam boiler. Capacities available are from 500Kgs/hr upto 3 Tonnes/hr steam in single furnace design & upto 6 Tonnes/hr steam in double furnace design.

Units are designed as per Indian Boiler Regulations. It can be used on various fuels such as coal, lignite, wood & bagasse pellets. Fluidised bed combustion system is supplied to burn fuels such as rice husk and saw dust.

An induced draft fan is provided for proper combustion & balanced draft in the combustion chamber.

High Thermal efficiency is achieved by using: a large furnace, a very efficient burning system & correct heat release rate between radiant and convective sections.

Boilers are designed to ensure uniform distribution of thermal and mechanical stresses in heat transfer surfaces.

The advantages of the RSW series units are:

- Minimum space required due to compact design
- Fast startup, erection & commissioning
- Very easy to operate & maintain
- Low power consumption
- Hinged doors for easy inspection & maintenance of boiler

Model	Capacity (kg/hr)
RSW 1000	1000
RSW 1500	1500
RSW 2000	2000
RSW 3000	3000
RSW 4000	4000
RSW 5000	5000
RSW 6000	6000





Smoke tube Package Steam Boiler  
(Horizontal Steam Boiler)



OSB\_Oil-Fired-Steam-Boiler-Series-2

The Mohican 4-pass wetback



[www.kiranequipments.com](http://www.kiranequipments.com)